

The Hawthorne School Apartments

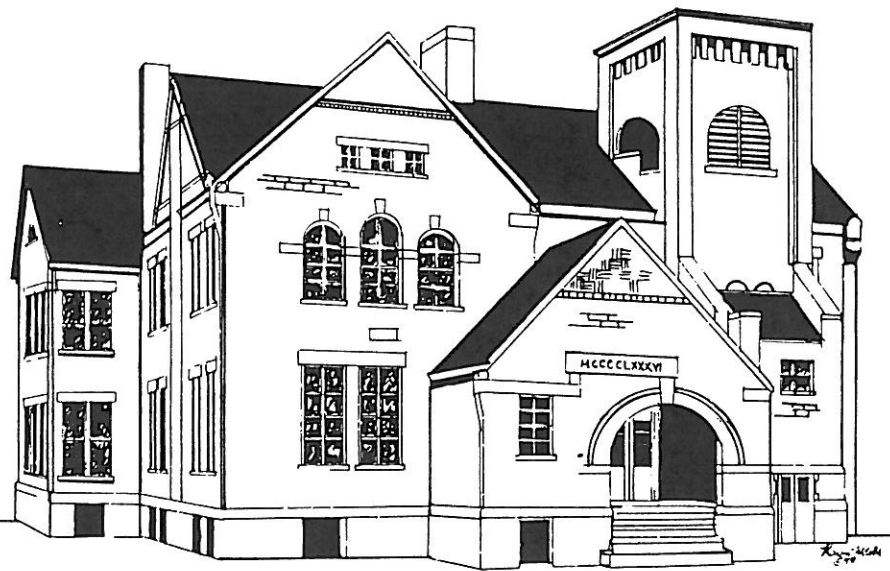
20 Unique Historic Apartments
in a Completely Renovated
1880's Victorian Grade School



226 McDaniel Street
in the McPherson Town
Historic District



Leasing: 937-224-4116



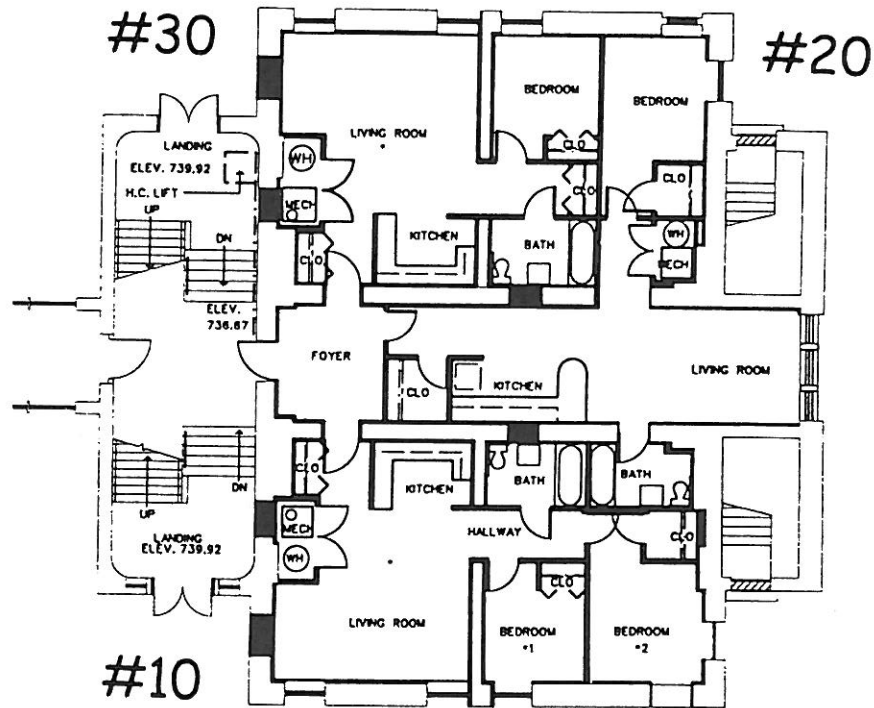
Owned by: The Hawthorne School Limited Partnership. The McPherson Town Neighborhood Development Corporation & CityWide Neighborhood Development Corporation, General Partners.

The Hawthorne School Apartments are located in a completely renovated former 1880's Victorian Grade School located in the McPherson Town Historic District. These living spaces are all unique and full of character.

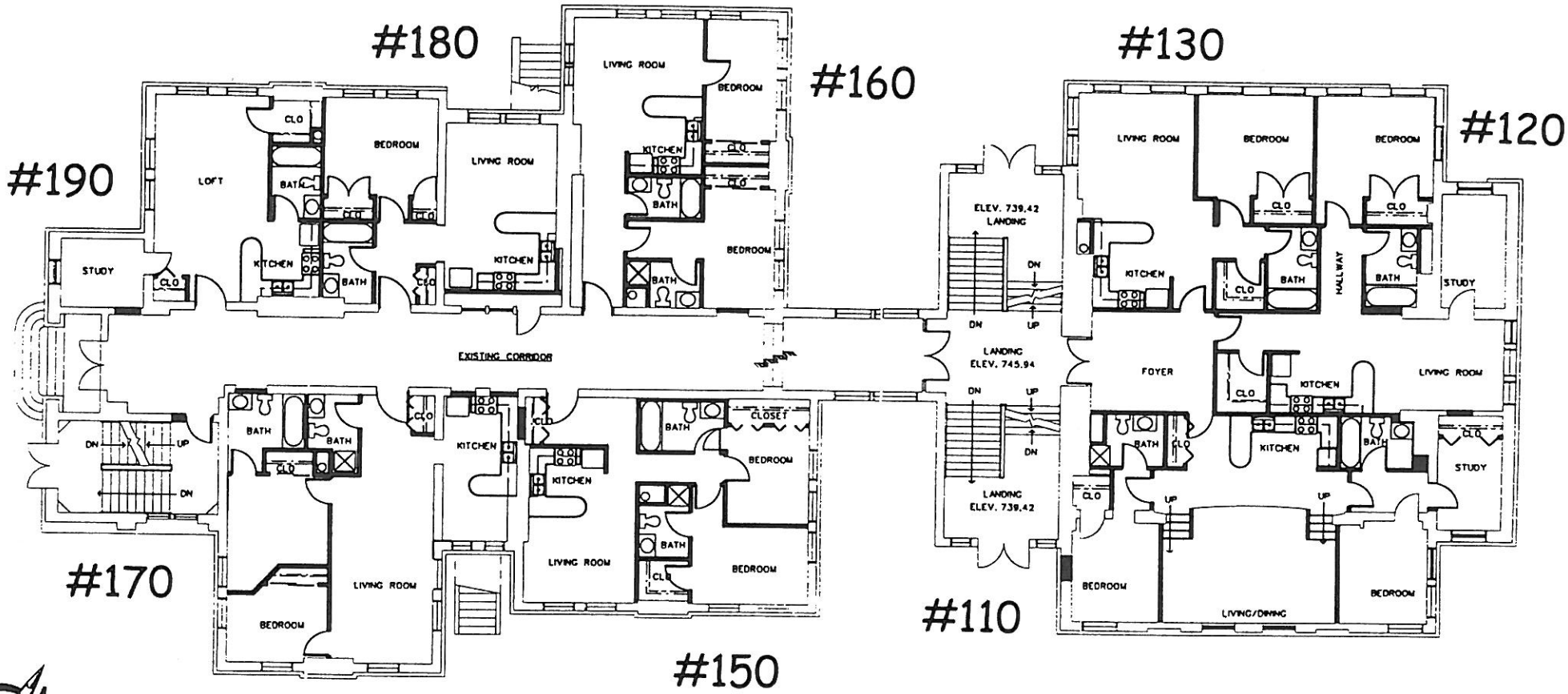
Features include: outstanding pressed tin ceilings, original oak hardwood floors, chalkboards, Victorian woodwork, new oak kitchens with extra tall cabinets, modern baths with oversize tubs, large windows which let in tons of natural light, mini-blinds, ceiling fans, school house light fixtures, and historic charm galore!

All units are equipped with individual gas forced air furnaces and central air. Appliances include electric range, refrigerator with ice maker, dishwasher, and disposal. All units are also pre-wired for phone and cable TV. Water and trash disposal are also included in the monthly rent. No two units are exactly alike, you are sure to find one that's right for you!!

Hawthorne School Apartments are located in a secure building with onsite laundry. Pets are permitted with deposit.



Garden Apartments



First Floor Apartments





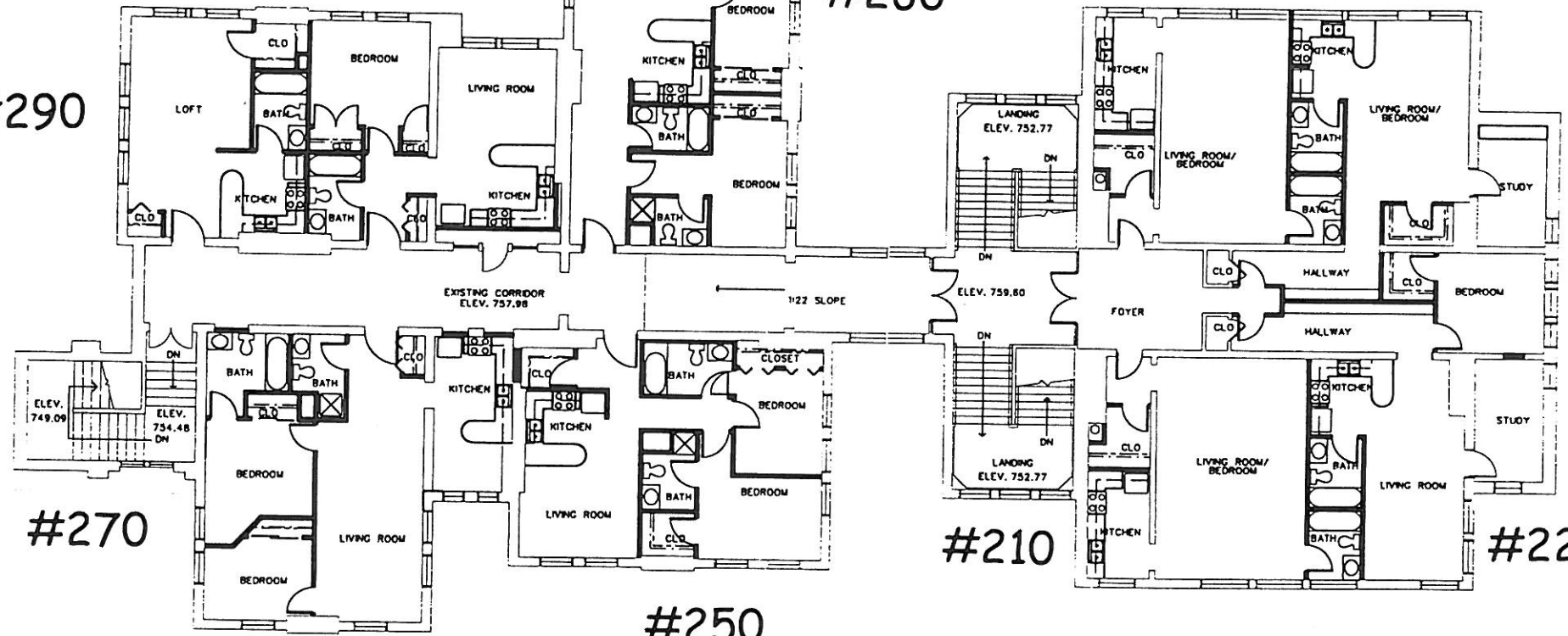
#290

#280

#260

#240

#230



#270

#250

#210

#220

Second Floor Apartments

Hawthorne School Apartments Rent Schedule and Unit Information

Apt	Rent	Notes:
10		2 Bed, 1 Bath, Carpet, 886-sf
20		1 Bed, 1 Bath, Carpet /Wood, 778-sf
30		1 Bed, 1 Bath, Carpet, 752-sf
110		2 Bed, 2 Bath, Stage, Dressing Rm., 1181-sf
120		1 Bed, 1 Bath, Study, Wood Fl., 870-sf
130		1 Bed, 1 Bath, Wood Floors, 760-sf
150		2 Bed, 2 Bath, Wood Floors, 867-sf
160		2 Bed, 2 Bath, Wood Fl., Built-ins, 874-sf
170		2 Bed, 2 Bath, Eat-in Kitchen, Carpet, 993-sf
180		1 Bed, 1 Bath, Carpet/Wood, 630-sf
190		Studio Unit, Study, Carpet, 590-sf

Apt	Rent	Notes:
210		Studio, Raised Area, Carpet/Wood, 685-sf
220		1 Bed, 1 Bath, Study, Wood/Carpet, 830-sf
230		Studio, Study, Wood Fl., Built-ins, 687-sf
240		Studio, Wood Floors, 620-sf
250		2 Bed, 2 Bath, Wood Floors, 867-sf
260		2 Bed, 2 Bath, Wood Fl., Built-ins, 874-sf
270		2 Bed, 2 Bath, Eat-in Kitchen, Carpet, 993-sf
280		1 Bed, 1 Bath, Carpet, 630-sf
290		Studio Unit, Carpet, 480-sf
	\$ 30	Garage Space (vehicle only, no storage)
	\$ 20	Basement Storage Lockers

For Leasing Information Contact:

Hawthorne School Leasing / 224-4116
226 McDaniel Street, #70 / Dayton, Ohio 45405